

# HARBOURSIDE

AN ICONIC  
WATERFRONT  
DESTINATION



SHOP.DINE.PLAY



Darling Harbour is Sydney's favourite leisure, food and entertainment destination, and Harbourside is centrally located in the hub of one of Australia's largest attractions.





Over 26 million people visit the Darling Harbour Precinct annually making it the second most visited destination in Australia.





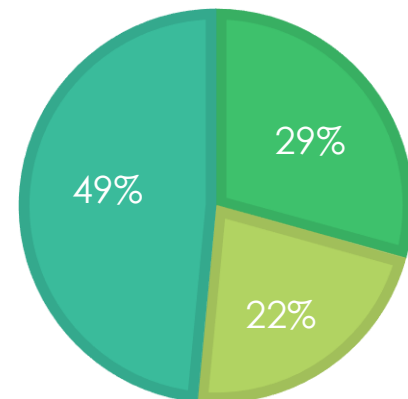
# CENTRE FACTS

Centre MAT	\$175m (Dec 13)	\$157m (Dec 14)
Centre Traffic	11.7m (Dec 13)	11.9m (Dec 14)
Total GLA	22,000m2	
Signature retailers and premier restaurants	Surf Dive Ski, Glue, Hurricanes, Pancakes on the Rocks, Kingpin Bowling, Crinitis, Hard Rock Café, Cyren	
Food Court Seats	475	

\*The above Centre Traffic statistics do not include the visitors dining on the Promenade.

## PLACE OF RESIDENCE

■ Overseas ■ Elsewhere in Australia ■ Metropolitan Sydney



# A DESTINATION

Located on the waters edge of Darling Harbour, only a short walk from the CBD and with magnificent views of the city's skyline, Harbourside offers a unique experience like no other in Australia and attracts over 11 million visitors per year.

Harbourside is a unique and truly versatile shopping, dining and leisure experience that includes:

- over 25 restaurants, bars and cafes.
- 70 retail stores
- 5 state of the art entertainment venues.



# SHOP

## Something for everyone

The retail mix is varied, offering a range of stores comprising of fashion for everyday, street wear, evening wear, sporting, footwear, accessories, sunglasses, bags and luggage stores.

The retail offer also includes art collections coupled with souvenir stores and money exchange to target visitors to the Centre.



# DINE

## Over 25 Restaurants, Bars and Cafes

All promenade restaurants enjoy North Easterly views across Darling Harbour perfect for all day city views.



## Food Court

With 475 seats, Harbourside's Food Court is a thriving environment open early to late. Bright and modern with simple decor has made the Food Court at Harbourside a popular choice for Sydneysiders and visitors. From Sushi to McDonalds there is something for everyone.



# PLAY

## 5 state of the art Entertainment venues

Kingpin Bowling, M9 Laser Wars, Flight Experience, 9D Cinemas, Racecentre

The operations are best in class and offer another dimension to Harbourside and Darling Harbour. Due to their uniqueness these operations have created a true destination of choice.





# A SYDNEY ICON

Transformed in the 1980's from a dockyard to one of the **WORLD'S GREATEST WATERFRONT DESTINATIONS**, this vibrant, modern precinct is a favourite playground for Sydneysiders and their guests.

Annual foot traffic in Darling Harbour Precinct exceeds **26 million visitors** (2013/14).  
Source: SHFA

Annualised foot traffic inside Harbourside: **11.9 million visitors** (Dec 2014). Source: Electronic Movement System

**5 minutes** from the CBD

Accessible by Foot, Ferry, Water Taxi, Light Rail, Bus and Car.



# DEVELOPMENT

## Revitalising one of Sydney's favourite places – Darling Harbour

The NSW Government and Darling Harbour Live's redevelopment of Darling Harbour will create one of the worlds **best places to live, meet and be entertained.**

More public spaces and world-class convention, exhibition and entertainment facilities are being created. Due to opening in late 2016, the transformation will make Sydney the first choice for major events.

**Harbourside will sit as a cornerstone to this exciting, revitalised precinct.**





# Surrounding Developments

Over \$9 billion in development  
currently underway along the  
harbour/foreshore.





# SOFITEL SYDNEY DARLING HARBOUR

Developer	Lend Lease
Type	Hotel
Completion	<b>2017</b>

1





# ICC SYDNEY

2

Developer	Lend Lease
Type	Convention Centre
Completion	<b>2016</b>





# ICC SYDNEY

Developer  
Type  
Completion

Lend Lease  
Exhibition Centre  
**2016**





# THE THEATRE

Developer

Type

Completion

Lend Lease

Entertainment  
Centre

2016

4





# DARLING SQUARE

Developer	Lend Lease
Type	Residential / Mixed
Completion	<b>2019</b>

5

An architectural rendering of Darling Square, a modern urban development. The scene features a wide, paved pedestrian plaza with a large, multi-level concrete seating area on the left. Numerous people are depicted walking, sitting, and playing in the plaza, creating a lively atmosphere. The background is dominated by a tall, slender skyscraper with a glass facade, flanked by lower-rise buildings with extensive glass windows and balconies. The sky is blue with scattered white clouds. A teal square with the number '5' is located in the bottom right corner.



6

# THE RIBBON SYDNEY

Developer | Grocon

Type | Commercial

Completion | **2018**





# FOUR POINTS BY SHERATON

Developer	M&L Hospitality
Type	Hotel
Completion	<b>2016</b>



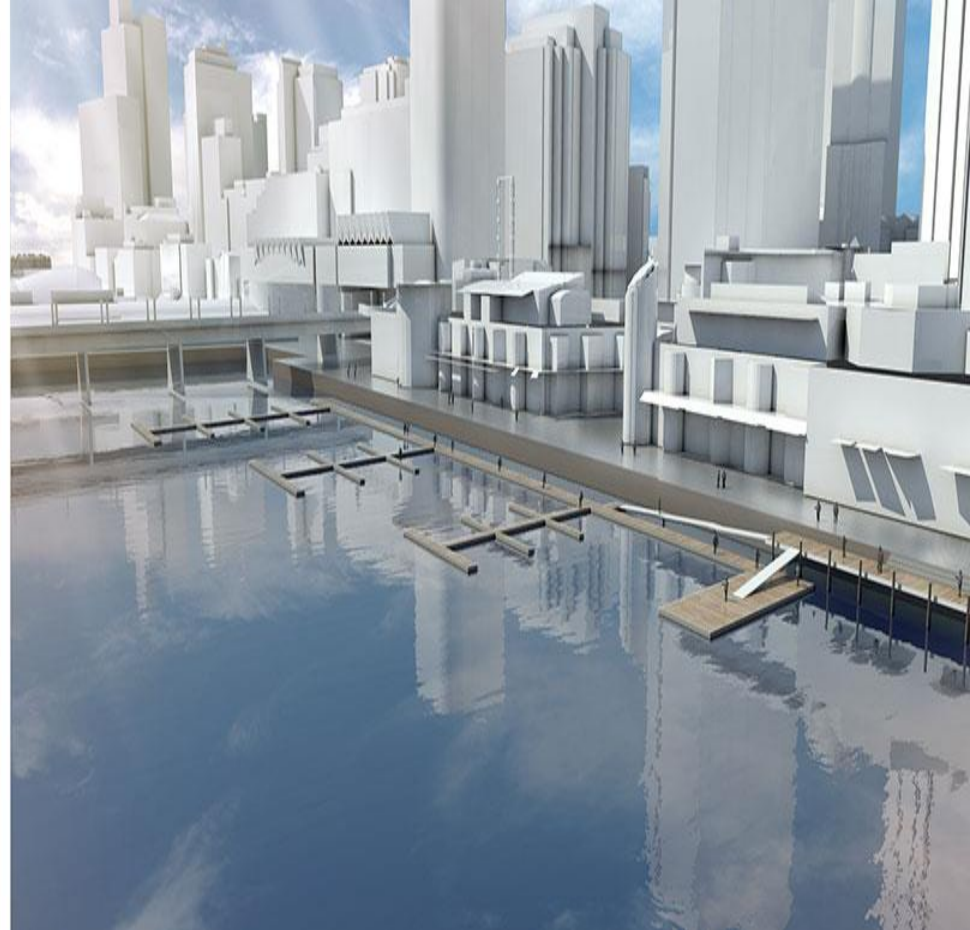




# BARANGAROO

Developer	Lend Lease
Type	Commercial / Mixed
Completion	<b>2020</b>





# COCKLE BAY RENEWAL

Developer

SHFA

Type

Marine

Completion

**2016 (Subject to DA approval)**

9



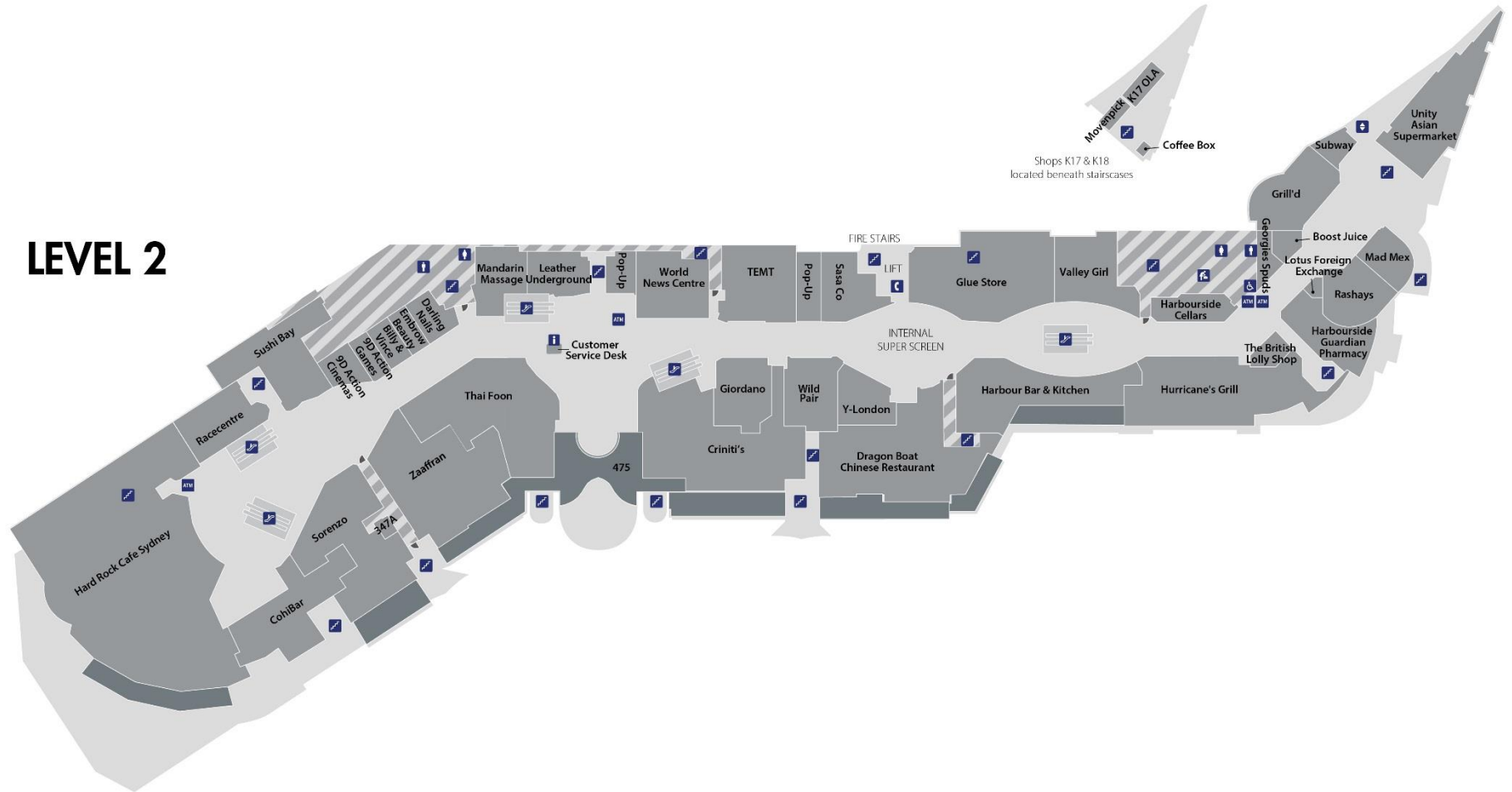
## LEVEL 1





# Map

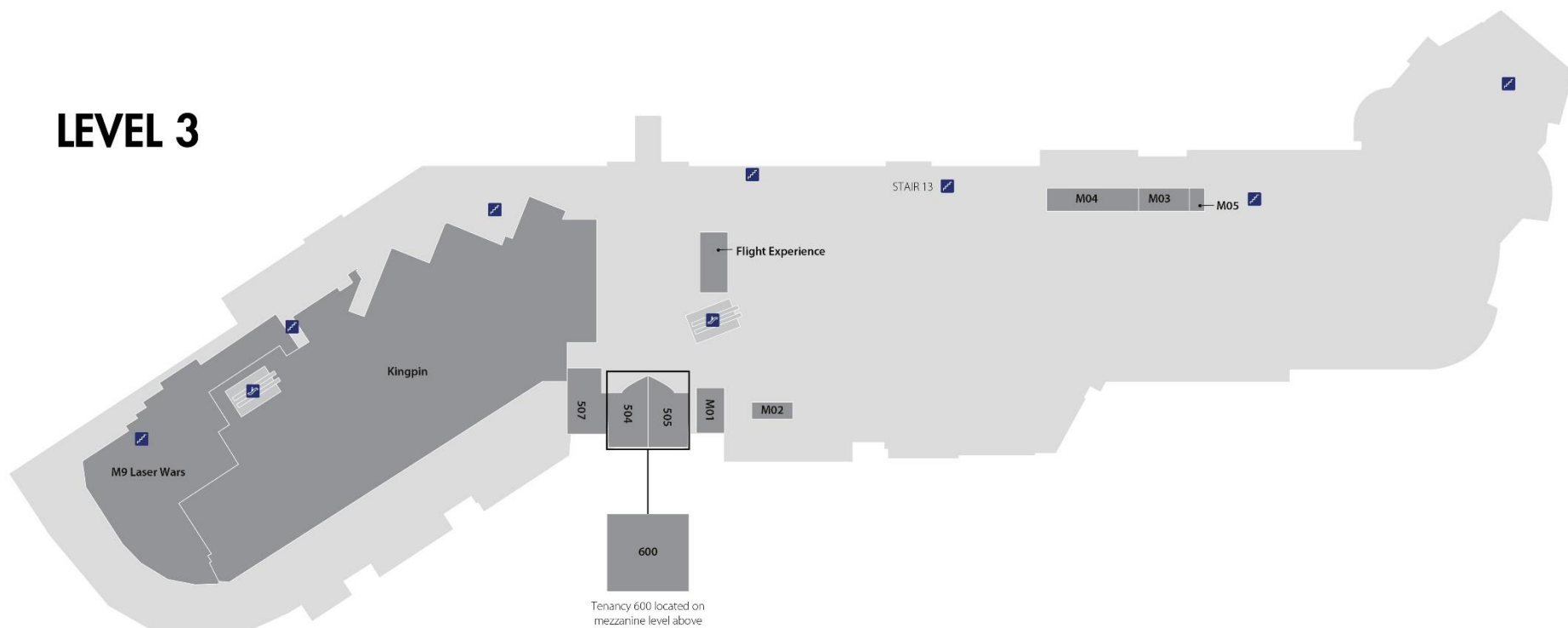
## LEVEL 2





# Map

## LEVEL 3





## DISCLAIMER

All reasonable care has been taken to ensure that the information in this booklet is correct at the time of printing. However, the information may change from time to time without notice. The trading patterns, other information and material contained in this booklet has been based on historical data compiled in good faith by Harbourside Shopping Centre. However no warranty is given by Harbourside Shopping Centre as to the accuracy of the information contained herein and naturally it is not possible for anyone to guarantee that trading patterns will continue in the future. Any retailer having regard to the material or information contained in this booklet should appreciate the risks in making any commercial decisions based on historical or any predicted trading patterns, and seek their own professional or other advice as appropriate without relying on this booklet.